

# DAIRY COW UNIFIED SCORE CARD

Breed characteristics should be considered in the application of this score card.

## MAJOR TRAIT DESCRIPTIONS

There are four major breakdowns on which to base a cow's evaluation. Each trait is broken down into body parts to be considered and ranked.

Perfect  
Score

15

### 1) Frame - 15%

The skeletal parts of the cow, with the exception of rear feet and legs. Listed in priority order, the descriptions of the traits to be considered are as follows:

**Rump (5 points):** Should be long and wide throughout. Pin bones should be slightly lower than hip bones with adequate width between the pins. Thurls should be wide apart. Vulva should be nearly vertical and the anus should not be recessed. Tail head should set slightly above and neatly between pin bones with freedom from coarseness. **Front End (5 points):** Adequate constitution with front legs straight, wide apart, and squarely placed. Shoulder blades and elbows set firmly against the chest wall. The crops should have adequate fullness blending into the shoulders. **Back/Loin (2 points):** Back should be straight and strong, with loin broad, strong, and nearly level. **Stature (2 points):** Height including length in the leg bones with a long bone pattern throughout the body structure. Height at withers and hips should be relatively proportionate. Age and breed stature recommendations are to be considered. **Breed Characteristics (1 point):** Exhibiting overall style and balance. Head should be feminine, clean-cut, slightly dished with broad muzzle, large open nostrils and strong jaw.

### 2) Dairy Strength - 25%

A combination of dairyness and strength that supports sustained production and longevity. Major consideration is given to general openness and angularity while maintaining strength, width of chest, spring of fore rib, and substance of bone without coarseness. Body condition should be appropriate for stage of lactation. Listed in priority order, the descriptions of the traits to be considered are as follows:

25

**Ribs (8 points):** Wide apart. Rib bones wide, flat, deep, and slanted towards the rear. Well sprung, expressing fullness and extending outside the point of elbows. **Chest (6 points):** Deep and wide floor showing capacity for vital organs, with well-sprung fore ribs. **Barrel (4 points):** Long, with adequate depth and width, increasing toward the rear with a deep flank. **Thighs (2 points):** Lean, incurving to flat and wide apart from the rear. **Neck (2 points):** Long, lean, and blending smoothly into shoulders; clean-cut throat, dewlap, and brisket. **Withers (2 points):** Sharp with chine prominent. **Skin (1 point):** Thin, loose, and pliable.

### 3) Rear Feet and Legs - 20%

Feet and rear legs are evaluated. Evidence of mobility is given major consideration. Listed in priority order, the descriptions of the traits to be considered are as follows:

20

**Movement (5 points):** The use of feet and rear legs, including length and direction of step. When walking naturally, the stride should be long and fluid with the rear feet nearly replacing the front feet. **Rear Legs-Side View (3 points):** Moderate set (angle) to the hock. **Rear Legs-Rear View (3 points):** Straight, wide apart with feet squarely placed. **Feet (3 points):** Steep angle and deep heel with short, well-rounded closed toes. **Thurl Position (2 points):** Near central placement between the hip and pin bones. **Hocks (2 points):** Adequate flexibility with freedom from swelling. **Bone (1 point):** Flat and clean with adequate substance. **Pasterns (1 point):** Short and strong with some flexibility, having a moderate, upright angle.

### 4) Udder - 40%

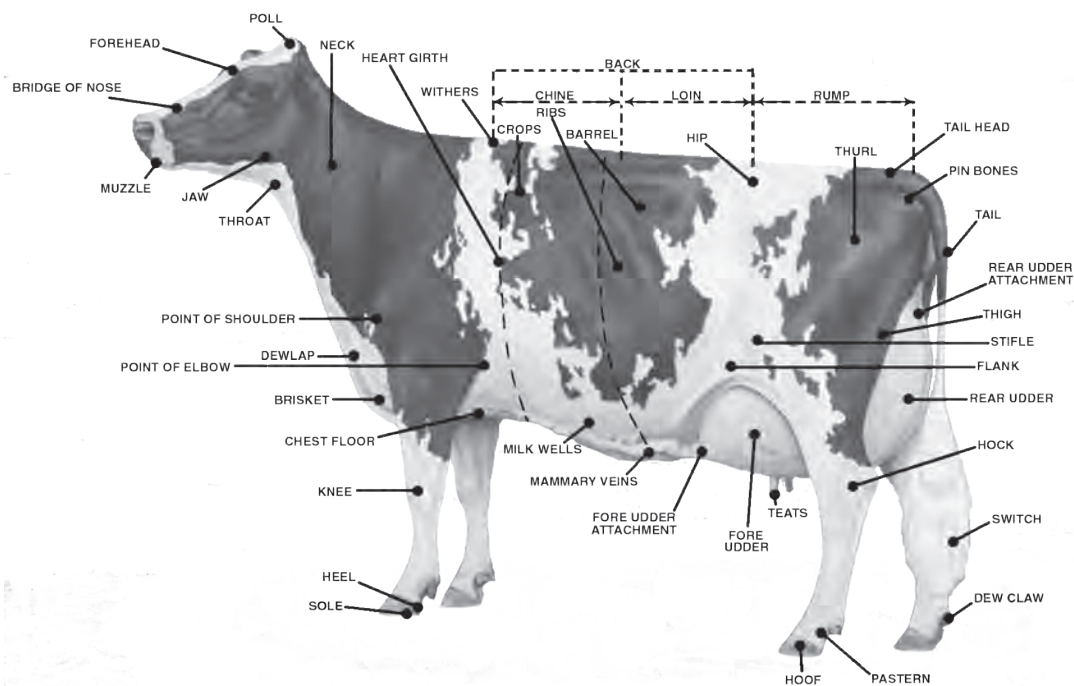
The udder traits are evaluated. Major consideration is given to the traits that contribute to high milk yield and a long productive life. Listed in priority order, the descriptions of the traits to be considered are as follows:

40

**Udder Depth (10 points):** Moderate depth relative to the hock with adequate capacity and clearance. Consideration is given to lactation number and age. **Rear Udder (9 points):** Wide and high, firmly attached with uniform width from top to bottom and slightly rounded to udder floor. **Teat Placement (5 points):** Squarely placed under each quarter, plumb and properly spaced. **Udder Cleft (5 points):** Evidence of a strong suspensory ligament indicated by clearly defined halving. **Fore Udder (5 points):** Firmly attached with moderate length and ample capacity. **Teats (3 points):** Cylindrical shape; uniform size with medium length and diameter; neither short nor long is desirable. **Udder Balance and Texture (3 points):** Udder floor level as viewed from the side. Quarters evenly balanced; soft, pliable, and well collapsed after milking. **(Note: In the Holstein breed, an equal emphasis is placed on fore and rear udder (7 points each). All other traits are the same as listed above.)**

TOTAL

100



## THE SEVEN BREEDS



**Ayrshire**



**Brown Swiss**



**Guernsey**



**Red & White**



**Holstein**



**Jersey**



**Milking Shorthorn**

### BREED CHARACTERISTICS

Except for differences in color, size, and head character, all breeds are judged on the same standards as outlined in the Unified Score Card. If any animal is registered by one of the dairy breed associations, no discrimination against color or color pattern is to be made.

**Ayrshire** Strong and robust, showing constitution and vigor, symmetry, style and balance throughout, and characterized by strongly attached, evenly balanced, well-shaped udder.

**HEAD**- clean cut, proportionate to body; broad muzzle with large, open nostrils; strong jaw; large, bright eyes; forehead, broad and moderately dished; bridge of nose straight; ears medium size and alertly carried.

**COLOR**- light to deep cherry red, mahogany, brown, or a combination of any of these colors with white, or white alone, distinctive red and white markings preferred.

**SIZE**- a mature cow in milk should weigh at least 1200 lbs.

**Brown Swiss** Strong and vigorous, but not coarse. Adequate size with dairy quality. Frailness undesirable.

**HEAD**- clean cut, proportionate to body; broad muzzle with large, open nostrils; strong jaw; large, bright eyes; forehead, broad and slightly dished; bridge of nose straight; ears medium size and alertly carried.

**COLOR**- body and switch solid brown varying from very light to dark; muzzle has black nose encircled by a white ring; tongue and hooves are dark brown to black.

**SIZE**- a mature cow in milk should weigh at least 1400 lbs.

**Guernsey** Strength and balance, with quality and character desired.

**HEAD**- clean cut, proportionate to body; broad muzzle with large, open nostrils; strong jaw; large, bright eyes; forehead, broad and slightly dished; bridge of nose straight; ears medium size and alertly carried.

**COLOR**- shade of fawn and white markings throughout clearly defined.

**SIZE**- a mature cow in milk should weigh 1200-1300 lbs.; Guernsey does not discriminate for lack of size.

### FACTORS TO BE EVALUATED

The degree of discrimination assigned to each defect is related to its function and heredity. The evaluation of the defect shall be determined by the breeder, the classifier or judge, based on the guide for discrimination and disqualifications given below.

#### HORNS

No discrimination for horns.

#### EYES

1. Blindness in one eye: *Slight discrimination.*
2. Cross or bulging eyes: *Slight discrimination.*
3. Evidence of blindness: *Slight to serious discrimination.*
4. Total blindness: *Disqualification.*

#### WRY FACE

*Slight to serious discrimination.*

#### CROPPED EARS

*Slight discrimination.*

#### PARROT JAW

*Slight to serious discrimination.*

#### SHOULDERS

Winged: *Slight to serious discrimination.*

#### CAPPED HIP

No discrimination unless affects mobility.

#### TAIL SETTING

Wry tail or other abnormal tail settings: *Slight to serious discrimination.*

#### LEGS AND FEET

1. Lameness - apparently permanent and interfering with normal function: *Disqualification.*
- Lameness - apparently temporary and not affecting normal function: *Slight discrimination.*
2. Evidence of crampy hind legs: *Serious discrimination.*
3. Evidence of fluid in hocks: *Slight discrimination.*
4. Weak pastern: *Slight to serious discrimination.*
5. Toe out: *Slight discrimination.*

#### UDDER

1. Lack of defined halving: *Slight to serious discrimination.*
2. Udder definitely broken away in attachment: *Serious discrimination.*
3. A weak udder attachment: *Slight to serious discrimination.*
4. Blind quarter: *Disqualification.*
5. One or more light quarters, hard spots in udder, obstruction in teat (spider): *Slight to serious discrimination.*

**Red & White** Rugged, feminine qualities in an alert cow possessing adequate size and vigor.

**HEAD**- clean cut, proportionate to body; broad muzzle with large, open nostrils; strong jaw; large, bright eyes; forehead, broad and slightly dished; bridge of nose straight; ears medium size and alertly carried.

**COLOR**- must be clearly defined red and white; black-red and brindle is strictly prohibited.

**SIZE**- a mature cow in milk should weigh 1400 lbs. and be well balanced.

**Holstein** Rugged, feminine qualities in an alert cow possessing Holstein size and vigor.

**HEAD**- clean cut, proportionate to body; broad muzzle with large, open nostrils; strong jaw; large, bright eyes; forehead, broad and moderately dished; bridge of nose straight; ears medium size and alertly carried.

**COLOR**- black and white or red and white markings clearly defined

**SIZE**- a mature cow in milk should weigh at least 1400 lbs.

**UDDER**- equal emphasis is placed on fore and rear udder (7 points each); all other traits are the same as listed on the PDCA scorecard.

**Jersey** Sharpness with strength indicating productive efficiency.

**HEAD**- proportionate to stature showing refinement and well-chiseled bone structure. Face slightly dished with dark eyes that are well set.

**COLOR**- some shade of fawn with or without white markings; muzzle is black encircled by a light-colored ring; switch may be either black or white.

**SIZE**- a mature cow in milk should weigh at least 1000 lbs.

**Milking Shorthorn** Strong and vigorous, but not coarse.

**HEAD**- clean cut, proportionate to body; broad muzzle with large, open nostrils; strong jaw; large, bright eyes; forehead, broad and slightly dished; bridge of nose straight; ears medium size and alertly carried.

**COLOR**- red or white or any combination (no black markings allowed).

**SIZE**- a mature cow in milk should weigh 1400 lbs.

6. Side leak: *Slight discrimination.*

7. Abnormal milk (bloody, clotted, watery): *Possible discrimination.*

#### LACK OF ADEQUATE SIZE

*Slight to serious discrimination. (Note: Guernsey does not discriminate for lack of size.)*

#### EVIDENCE OF SHARP PRACTICE

(Refer to PDCA Code of Ethics)

1. Animals showing signs of having been tampered with to conceal faults in conformation and to misrepresent the animal's soundness: *Disqualification.*
2. Uncalved heifers showing evidence of having been milked: *Slight to serious discrimination.*

#### TEMPORARY OR MINOR INJURIES

Blemishes or injuries of a temporary character not affecting animal's usefulness: *Slight to serious discrimination.*

#### OVERCONDITIONED

*Slight to serious discrimination.*

#### FREEMARTIN HEIFERS

*Disqualification.*